



Orchard House, Chirnside Station, TD11 3LJ



Offers Around £445,000

- Detached Family House
- Farmhouse Style Kitchen
- Office / Bedroom 5
- Utility Room & Ample Storage
- Integral Double Garage
- 4 Bedrooms (Master with En-suite)
- Spacious Living / Dining Room
- Family Bathroom & WC
- Bright Galleried Entrance Hallway
- Surrounding Enclosed Garden

 5

 3

 1

EPC D

 G

Interested In  
viewing this property?

Viewing by appointment only with Melrose & Porteous

01361 882 752 | [info@melroseporteous.co.uk](mailto:info@melroseporteous.co.uk) | [www.melroseporteous.co.uk](http://www.melroseporteous.co.uk)



## Orchard House, Chirnside Station, TD11 3LJ

### LOCATION:

Chirnside Station is a small hamlet which was largely established by the railway which operated between 1849 and 1951, and is also adjacent to the paper mill. The cottage sits approx. 1 mile away from the Berwickshire village of Chirnside which offers a good selection of local amenities including a co-op, newsagents, post office, garages, and pharmacy. Chirnside also offers a range of recreational facilities including tennis court, football pitches, bowling club and boxing club. Berwick-Upon-Tweed is approx. 9 miles from the property and Duns is approx. 6 miles, both towns provide a wider range of amenities.

### DESCRIPTION:

A substantial detached house built in 2004, featuring well-proportioned rooms throughout. It boasts a large entrance hall with a distinctive door and window feature extending over two floors. The spacious farmhouse-style kitchen provides access to the utility room and the integral double garage. Double doors connect the kitchen to the generously sized L-shaped living / dining room. On the ground floor, there is an office that could serve as a fifth bedroom, a WC, and storage space. The first floor offers a bright open galleried landing leading to four bedrooms, including a master bedroom with an en-suite, and a family bathroom. The house is equipped with oil central heating, underfloor heating on the ground floor, and double glazing. Viewing is highly recommended to appreciate the bright spacious accommodation.

### EXTERNALLY:

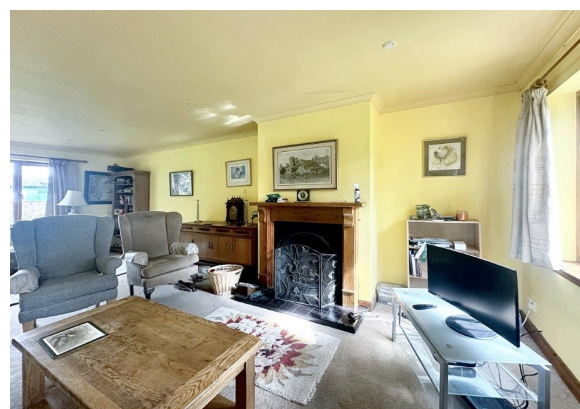
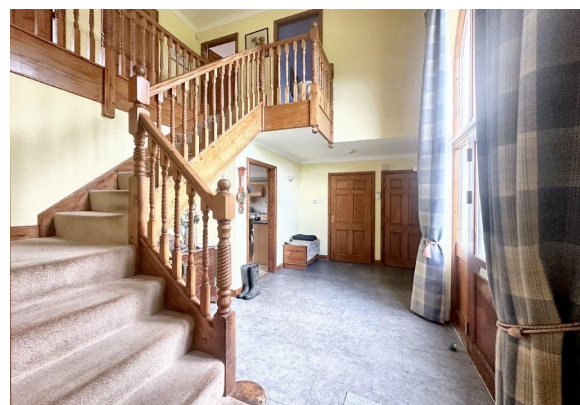
This rural property sits on an enclosed garden plot extending to nearly a third of an acre. The surrounding garden is mainly laid to lawn with some planting and fruit trees. A block-paved driveway leads to the double garage, providing additional parking.

### SERVICES:

Mains Electricity and Water. Septic Tank Drainage. Oil Fired Central Heating.

### IMPORTANT INFORMATION:

By mutual arrangement. Home report available. Additional arrangements through agents Offers should be submitted to Melrose & Porteous, 47 Market Square, Duns, Berwickshire, TD11 3BX (DX 556 522 DUNS) Only those parties who have formally requested their interest may be advised of any closing date fixed for offers. These particulars are for guidance only. All measurements were taken by a laser tape measure and may be subject to small discrepancies. Although a high level of care has been taken to ensure these details are correct, no guarantees are given to the accuracy of the above information. While the information is believed to be correct and accurate any potential purchaser must review the details themselves to ensure they are satisfied with our findings.



Interested In  
Viewing this property?

Viewing by appointment only with Melrose & Porteous

01361 882 752 | [info@melroseporteous.co.uk](mailto:info@melroseporteous.co.uk) | [www.melroseporteous.co.uk](http://www.melroseporteous.co.uk)



# Orchard House, Chirnside Station, TD11 3LJ

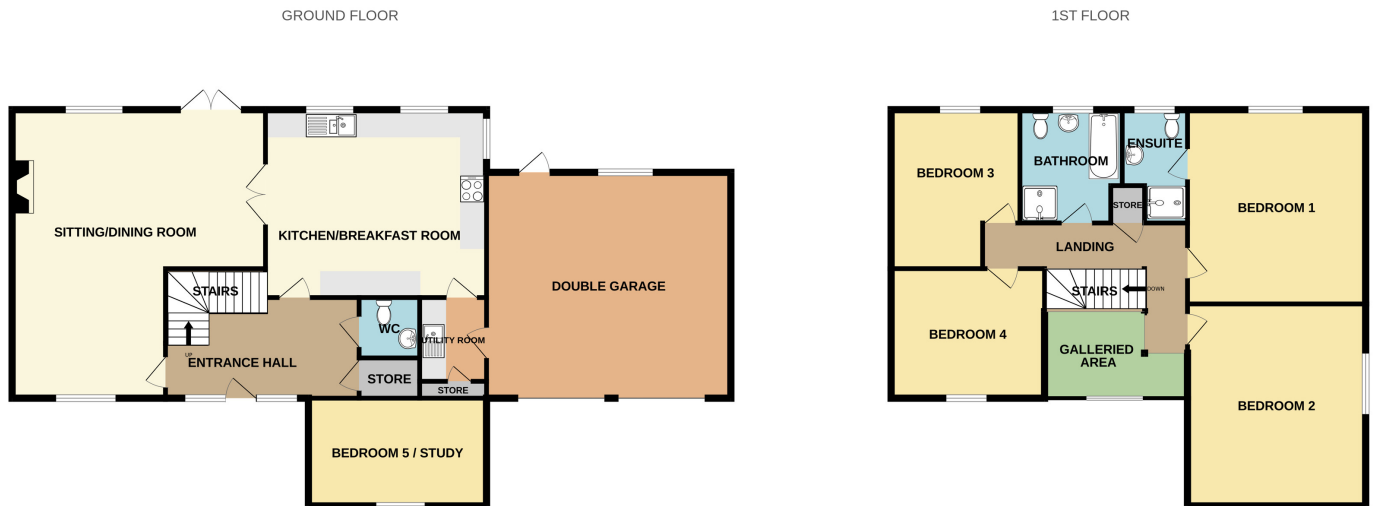


Interested In  
viewing this property?

Viewing by appointment only with Melrose & Porteous

01361 882 752 | [info@melroseporteous.co.uk](mailto:info@melroseporteous.co.uk) | [www.melroseporteous.co.uk](http://www.melroseporteous.co.uk)

## FLOOR PLAN:



Whilst every attempt has been made to ensure the accuracy of the floorplan contained here, measurements of doors, windows, rooms and any other items are approximate and no responsibility is taken for any error, omission or mis-statement. This plan is for illustrative purposes only and should be used as such by any prospective purchaser. The services, systems and appliances shown have not been tested and no guarantee as to their operability or efficiency can be given.  
Made with Metropix ©2024

## ACCOMMODATION:

- HALL (4.84M X 3.20M) at widest
- STORE (1.71M X 0.90M)
- KITCHEN (5.51M X 4.68M)
- STORE (1.81M X 0.50M)
- GALLERY LANDING (L-SHAPED)
- BEDROOM 1 (4.61M X 4.45M)
- AIRING CUPBOARD (0.82M X 0.80M)
- BEDROOM 3 (3.51M X 3.41M) at widest
- INTEGRAL DOUBLE GARAGE (6.08M X 5.65M)
- OFFICE / BEDROOM 5 (4.46M X 2.70M)
- WC (1.71M X 1.20M)
- UTILITY ROOM (2.09M X 1.81M)
- LIVING / DINING ROOM (7.21M X 6.33M) at widest
- BEDROOM 2 (4.45M X 3.98M)
- EN-SUITE SHOWER (2.97M X 1.50M) at widest
- BATHROOM (2.75M X 2.27M)
- BEDROOM 4 (3.82M X 3.62M) at widest

Interested In  
viewing this property?

Viewing by appointment only with Melrose & Porteous

01361 882 752 | [info@melroseporteous.co.uk](mailto:info@melroseporteous.co.uk) | [www.melroseporteous.co.uk](http://www.melroseporteous.co.uk)



## Book your Free, no-obligation property appraisal & valuation.

Request a home visit for one of our team to thoroughly review your property and provide you with an accurate price. You can find more information on our website.